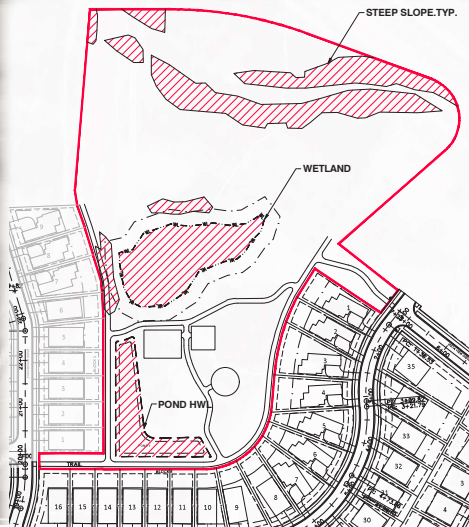
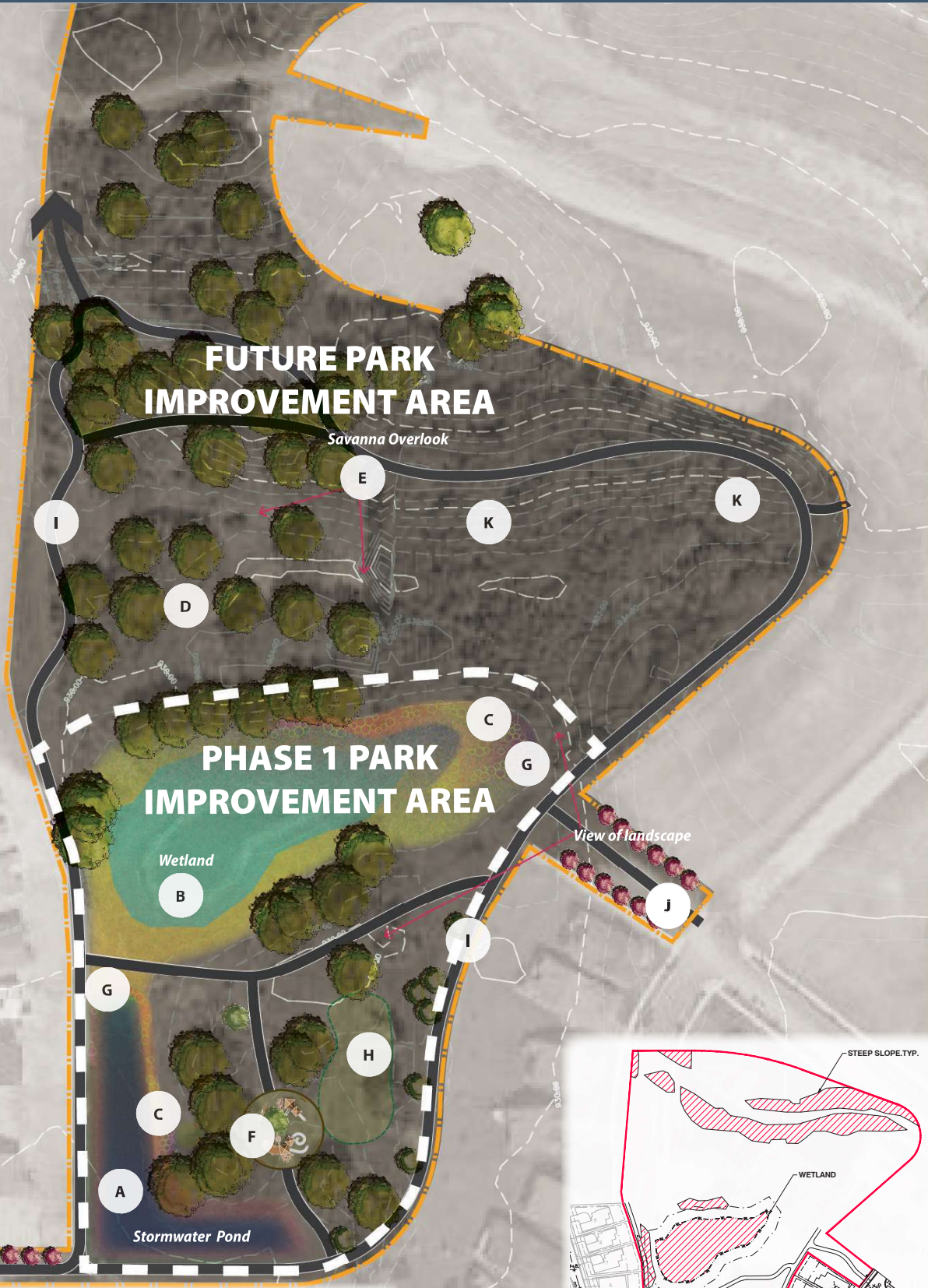


# Concept Plan

- A** Stormwater Pond
- B** Wetland Restoration
- C** Pollinator Plantings
- D** Restored Savanna
- E** Savanna Overlook
- F** Playground
- G** Interpretive Signage
- H** Open Play Field
- I** Paved Loop Trail
- J** Entry Allee
- K** Buckthorn Management



- Native habitat restored throughout
- Trails and recreational amenities tucked into savanna
- Trail connection north to Chaska Creek through open space corridor
- Emphasis on highlighting the site's natural beauty by providing sensitively sited access and viewing opportunities
- Artful plantings create landmarks or areas of interest that provide interest throughout the park
- An area for potential play is sited between the two entrances

