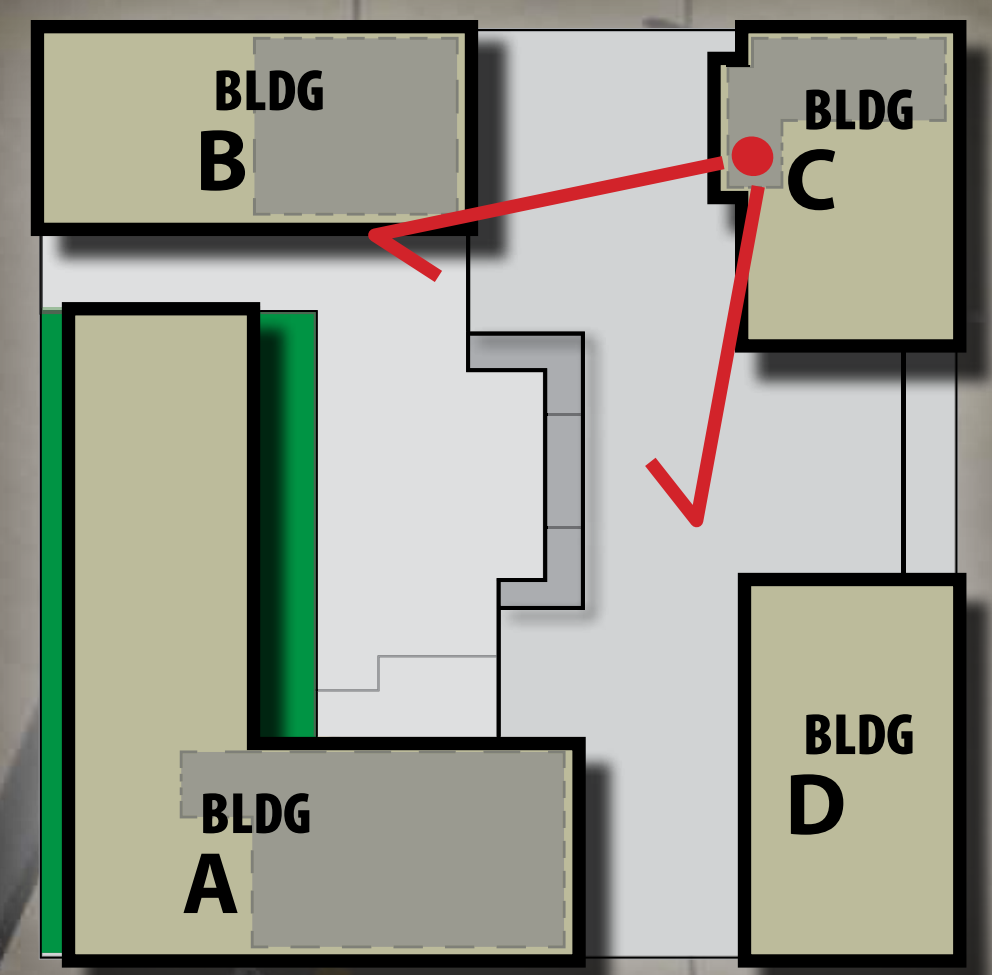


View from Roof Top of Building C to the SouthWest



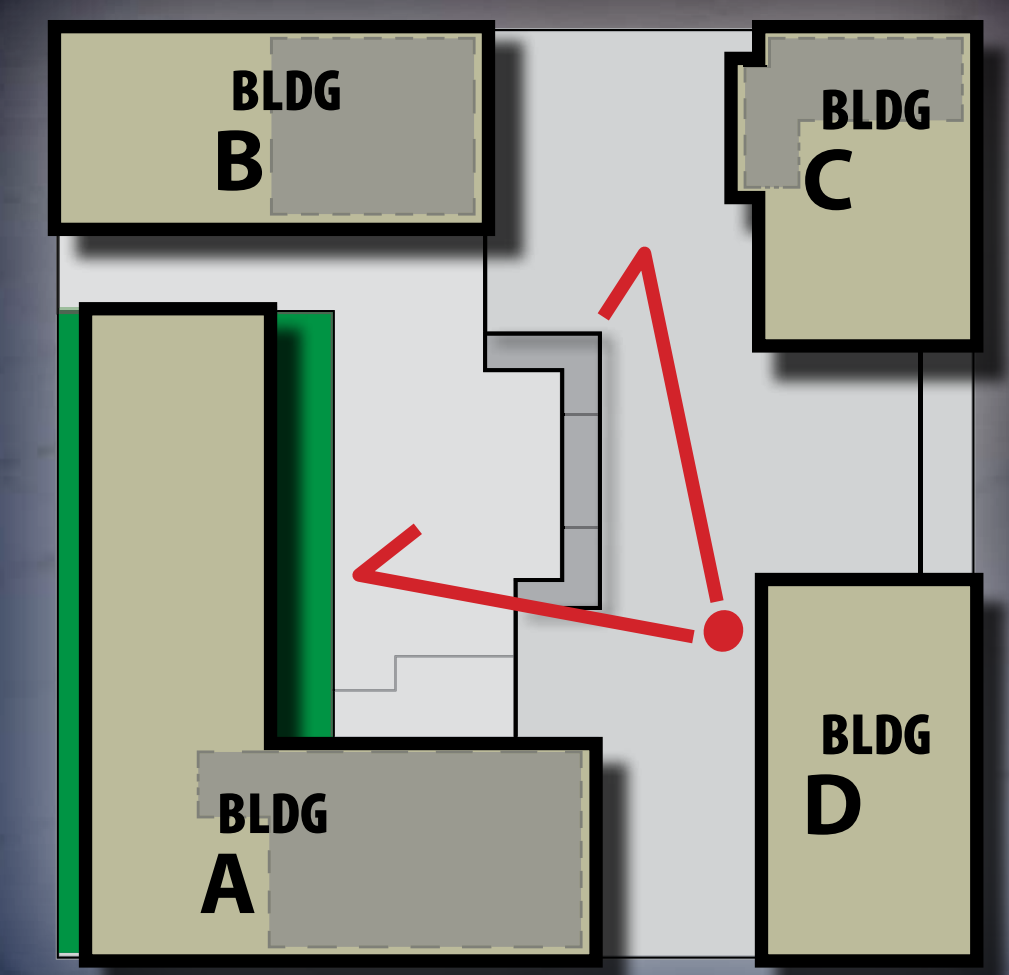
- 1 - Terraced Plaza
- 2 - Pavilion
- 3 - Seasonal Movable Structures (Winter/Summer Market)
- 4 - Outdoor Fire Pit
- 5 - 1st Floor Commercial (Possible Gallery Space)
- 6 - Private Roof Top Outdoor Space
- 7 - Vertical Circulation (Access to Underground Parking)



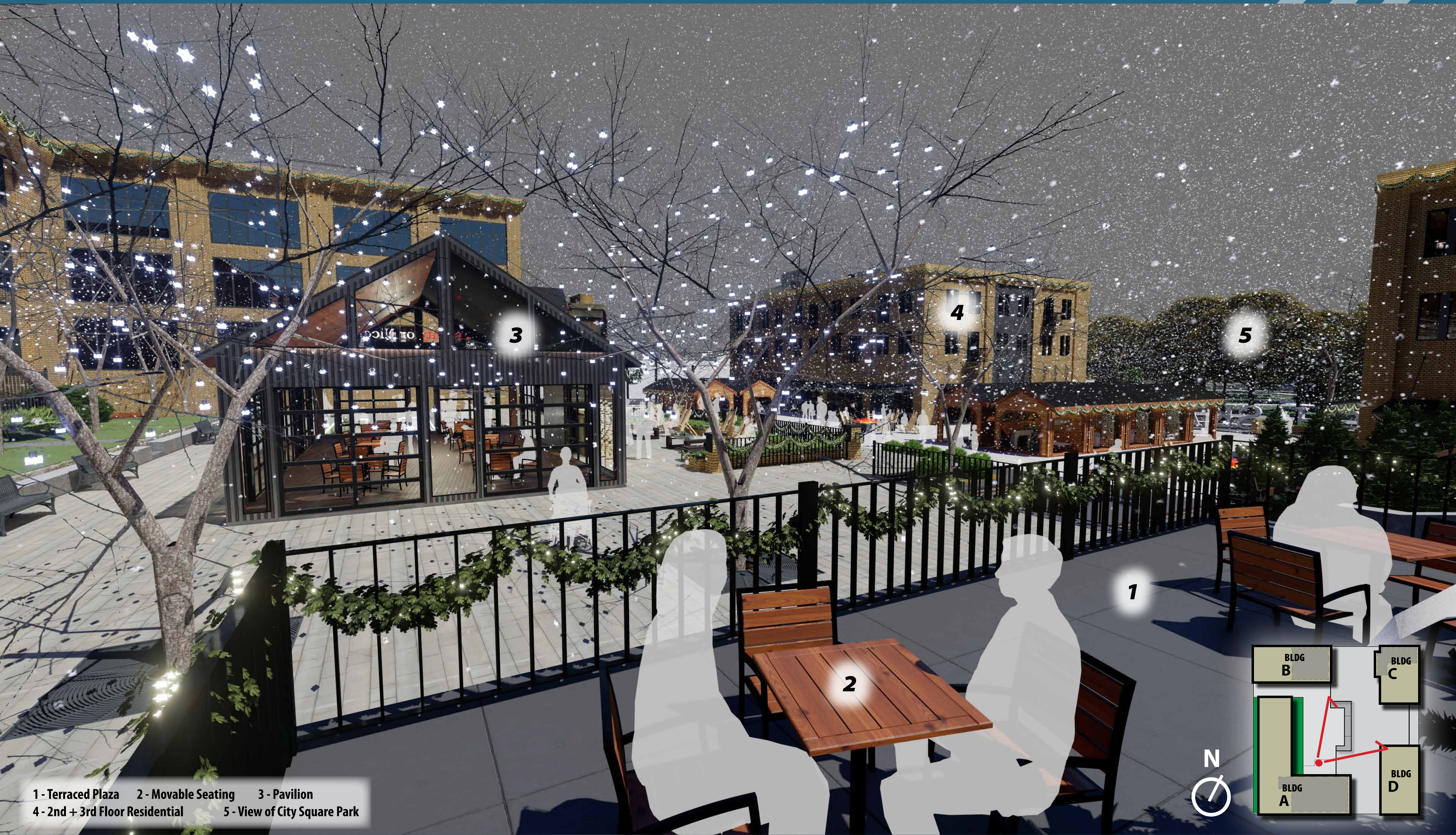
View from Lower Paseo Looking NorthWest



- 1 - Paseo
- 2 - Outdoor Fire Pit
- 3 - Movable Seating (Reflecting Brickyard Wheelbarrow)
- 4 - Pavilion
- 5 - Seasonal Movable Structures (Winter/Summer Market)



View from Terraced Plaza to the NorthEast



View from Pine Street Entry toward City Square Park

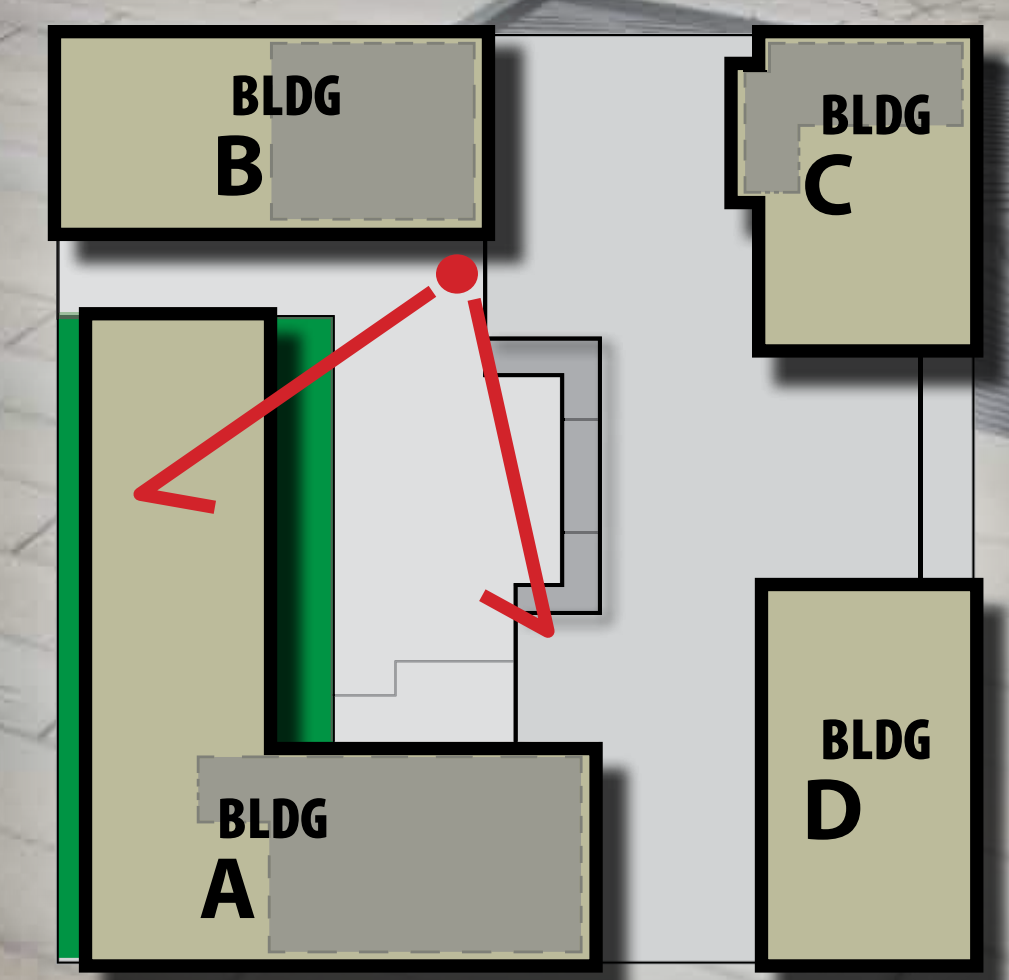


- 1 - Plaza to Paseo (Entrance from Pine St.)
- 2 - Residential
- 3 - Pavilion
- 4 - Outdoor Games (Curling/9 Pin Bowling)
- 5 - View of City Square Park

View from Terraced Plaza toward Building A



- 1 - Residential (1st Floor walk-outs)
- 2 - Vertical Circulation (Access to Underground Parking)
- 3 - Pavilion
- 4 - Outdoor Games (Curling/ 9 Pin Bowling)
- 5 - Plaza Connection to Pine Street



View from 3rd Street Entry Looking North

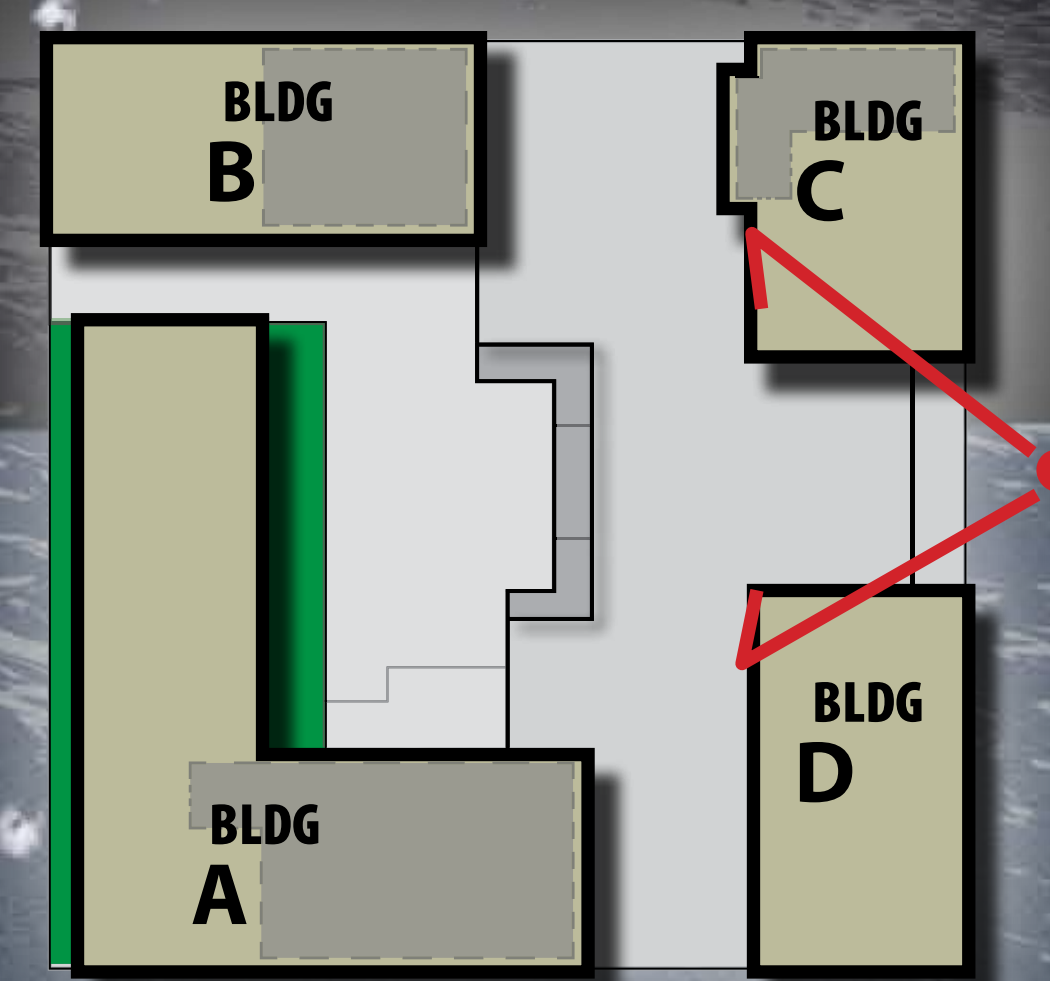


1 - Paseo 2 - Entry for Underground Parking 3 - Residential 4 - 1st Floor Commercial

View from City Square Park Looking West - Day View



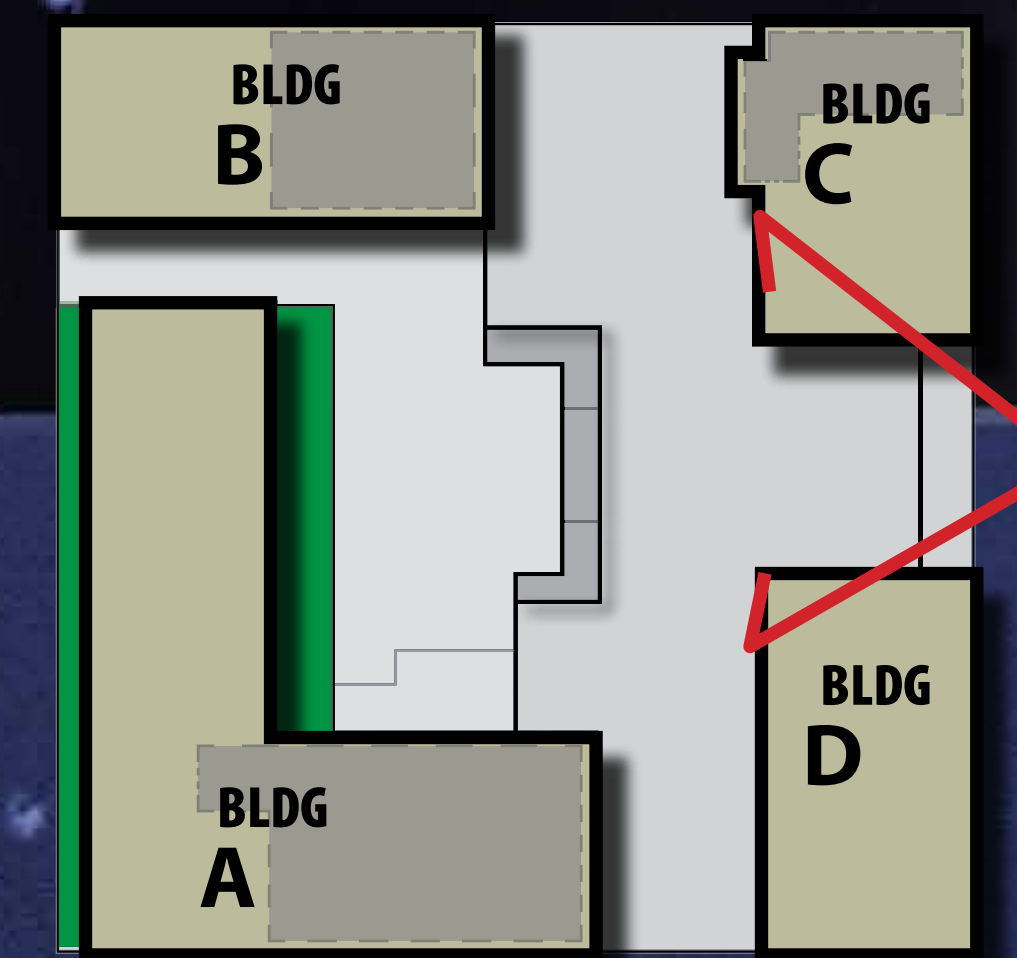
1 - Entry Identity Feature 2 - 1st Floor Commercial 3 - Seasonal Movable Structures (Winter/Summer Market) 4 - 2nd + 3rd Floor Residential



View from City Square Park Looking West - Night View



1 - Entry Identity Feature 2 - 1st Floor Commercial 3 - Seasonal Movable Structures (Winter/Summer Market) 4 - 2nd + 3rd Floor Residential



View from 4th Street Entry Looking East - Summer Dining



1 - Paseo 2 - 1st Floor Commercial 3 - 2nd + 3rd Floor Residential 4 - Seasonal Outdoor Dining

